

Introduction

Successful heritage areas have a strong grassroots base involving local residents, organizations, and non-profit groups in the operations of the heritage area. In addition, a close coalition between a strong grassroots base, local and state governments, and investors with a small investment from Congress and some technical expertise from the National Park Service creates a unique opportunity for meeting the challenges and needs of the resources and communities of a heritage area.

The IMCNHC was the first national heritage corridor designated in 1984 and has always had a strong grassroots base that has come together in both “official” and ad-hoc ways. Over the last 20 plus years, a variety of programs and projects have been completed both inside and outside the official structure set up by the IMCNHC Commission.

This plan proposes a different structure for the working relationship of all those interested in the IMCNHC. Established in 1981, the Canal Corridor Association (CCA) has always been part of the grassroots base of the IMCNHC working on a variety of projects over the last almost thirty years. In 2006, CCA was asked by Congress to expand its role and be the convener and the organizer of the “official” IMCNHC efforts moving forward.

Partnership Strategy: The Canal Alliance will engage with many partners to complete its work.

The Canal Alliance is a group of self-selected stakeholders that sign an Canal Alliance partnership agreement to work toward the vision and mission of the heritage corridor and agree to abide by its guiding principles. Each Canal Alliance member identifies the resources they bring to the table annually to contribute to the local investment.

Canal Alliance membership is open to everyone. There are opportunities available to become involved in the projects, programs, and activities of the heritage corridor whether you are a recreation enthusiast, a historian, or you are interested in the economic development of your community. Although members of the Canal Alliance may have diverse objectives or interests, they agree to work together toward a common mission of protecting and preserving the natural, historical, and cultural resources of the Corridor; advancing and stimulating economic development and activity within the Corridor; creating and enhancing opportunities for recreation in the Corridor; and interpreting and cultivating the history of the Corridor and its significance in the settlement and growth of the region and nation.

**Figure 5.1. Alliance Committee/
Resource Committees**

Resource Protection & Preservation
Committee
Recreation Committee
Conservation Committee
Education/Interpretation Committee
Tourism Committee
Alliance Committee

Heritage areas are dependent on their partners and volunteers to achieve their goals. Without their partnership, support, and collaboration, heritage areas would lack the ability to make a lasting difference. The necessity of volunteerism for the success of the IMCNHC cannot be overemphasized. Our partnership strategy depends upon engaging and retaining a strong volunteer base that will work toward achieving the vision, mission, and guiding principals of the IMCNHC.

The work of the IMCNHC will be informed and shaped through the Canal Alliance.

Canal Alliance members will come together around common goals, forming committees and working groups. These committees and working groups will be flexible, able to adapt and change as the needs of the Canal Alliance and the IMCNHC change. During the planning process, five initial resource committees and several working groups were identified to give structure to the Canal Alliance. They are represented in Figures 5.1 and 5.2 and are explained in more detail in this part of the plan.

The Canal Alliance, through these resource committees and working groups, will come together to enlarge and inform the IMCNHC coordinating structure. The coordinating structure is comprised of the Canal Corridor Association Board, a coordinating committee called the Canal Alliance Committee, and Canal Alliance staff. Canal Alliance members will populate the Canal Alliance Committee. The Canal Alliance Committee will be assisted in their efforts by the Canal Alliance staff. Details on the coordinating structure can be found at the end of this part of the plan.

Canal Alliance Membership

Individuals and organizations join the Canal Alliance annually by signing an Canal Alliance Pledge Agreement (Figure 5.3). Members agree to work toward the vision and mission of the IMCNHC and abide by its guiding principles. Canal Alliance members identify the resources that they are willing to invest in the IMCNHC.

Individuals or organizations can become a member of the Canal Alliance by downloading the Canal Alliance Membership Agreement, filling in the appropriate information, signing the agreement, and mailing the completed agreement to the Canal Corridor Association. Membership is open to individuals and organizations that have an interest in a variety of areas such as preservation, recreation, conservation, education, interpretation, heritage development, and/or tourism.

Figure 5.2. Canal Alliance Groups

Canal Working Group
Special Places Partners
Special Places Advocates
Recreation Partners
Recreation Advocates
Conservation Partners
Conservation Advocates
Storytelling Partners
Education Partners
Tourism Alliance Working Group
Tourism Partners
Designated Sites & Events
Investors
Canal Alliance Members-At-Large

Responsibilities of Canal Alliance Members

- Work toward the vision and mission of the IMCNHC
- Abide by the guiding principals of the IMCNHC
- Contribute to the local investment
- Volunteer expertise

Benefits of Canal Alliance Membership

- Join others in working toward the goals of the IMCNHC
- Participate in IMCNHC activities and projects that otherwise would not happen
- Receive information about the IMCNHC
- Receive invitations to a wide variety of events
- Receive invitations to trainings, conferences, tours
- As is appropriate, benefit from collaborations in marketing such as a Corridor website

Figure 5.3. Canal Alliance Pledge

Canal Alliance Pledge for 2011-2012

As a member of the Alliance in the Illinois & Michigan Canal National Heritage Corridor (IMCNHC), the undersigned dedicates himself/herself to join other Alliance members in supporting the Corridor's vision, mission, guiding principles, and goals. To uphold the integrity and purpose of the management plan, the undersigned pledges to work on behalf of the common good of the heritage corridor and make decisions that validate the intended vision, mission, guiding principles, and goals of IMCNHC.

Vision 2021

The Illinois & Michigan Canal connected the Illinois River to Lake Michigan, bringing people and commerce to northeastern Illinois. The canal and the towns that grew up along it share a legacy. Through interpretation, preservation and providing educational and recreational experiences, we see the Heritage Corridor creating economic development, recreation and education opportunities for residents and visitors, making the Corridor more prosperous and a place where people enjoy the benefits created by the canal and take pride in the region's history.

Mission Statement

The mission of the I&M Canal National Heritage Corridor is to: protect and preserve the natural, historical and cultural resources of the Corridor; advance and stimulate economic development and activity within the Corridor; create and enhance opportunities for recreation in the Corridor; and interpret and cultivate the history of the Corridor and its significance in the settlement and growth of the region and nation.

Guiding Principles

Stewardship:

We hold our history in high regard and will use it to inform our stewardship decisions.

We will respect the environment and property, public and private.

We will respect each community's needs and goals in a way that is consistent with the concept that the Corridor is a region consisting of many communities and places which are geographically, historically and culturally connected by the canal.

We will consider sustainability as an important criterion in making plans, selecting projects and allocating resources.

We will communicate to our partners and the public in multiple ways to reach as many as possible, using technology to bring the Corridor to the world.

We will include all groups, including future generations, in our plans, goals and actions.

History:

We will appreciate the area's history both before and after the canal was created.

We will provide education about the canal and the Corridor.

We will respect our history and culture through honest and authentic portrayals of places, people and events.

We will use multiple forums and media to spread the word about the Corridor's history to as wide an audience as possible.

Economic Development:

We will encourage and foster economic development opportunities in the Corridor.

We will provide places where people can bring their families and friends for recreation and fun.

Goals

STORIES Goal: The rich and complex stories of the history and continuing importance of the I&M Canal Corridor will be told through increasingly accurate, compelling and interesting ways to larger audiences.

SPECIAL PLACES Goal: The Corridor’s distinctive sense of place and natural, cultural and historic resources will be recognized, embraced and protected.

RECREATION Goal: The recreational amenities of the Corridor will be enhanced and expanded to facilitate their enjoyment by more people.

CONSERVATION Goal: The stewardship of the corridor’s natural resources will be improved. Both the number of stewards and the commitment level and involvement of stewards will be increased.

ECONOMIC IMPACT Goal: The Corridor’s economic growth will be built through an increase in heritage tourism and heritage development. Historical and cultural based venues in the Corridor will be enhanced through increased interpretation, use of new technologies, and increases in visitor services and marketing. Entrepreneurial and family-owned businesses will be supported with increased tourism strengthening our historic downtowns.

SUSTAINABILITY Goal: The work of the IMCNHC will be sustained after 2021 by continually engaging more people in increasingly intense roles, continuing to strengthen the collective voice of the region, continuing the coordination and celebration of the work, and securing sustainable funding sources.

The Canal Corridor Association pledges to:

- Keep the Alliance members updated on the implementation of the management plan, events, training workshops, and other opportunities available to members of the Alliance.
- Maintain the IMCNHC website and blog
- Send you a copy of the IMCNHC annual report
- Staff meetings and sponsor events which will bring Alliance members together

I pledge to contribute to the efforts in the following ways: (Check all that apply)

- Contribute \$ _____
- Contribute in-kind goods and services
- I pledge _____ volunteer hours within 2011-2012 and will record my involvement in the IMCNHC on a quarterly basis

I am interested in the following geographic areas of the IMCNHC. (Check all that apply)

- All
- Chicago
- Cook County
- Grundy County
- LaSalle County
- Will County

Interest Areas (Check all that apply)

- Conservation
- Education
- Heritage Development/Historic Preservation
- Interpretation
- Recreation
- Tourism

I am interested in joining the following Alliance groups

- Special Places Partners/Advocates
- Recreation Partners/Advocates
- Conservation Advocates
- Storytelling Partners
- Education Partners
- Tourism Partners

Signature

Date

Printed Name

Email Address

Address:

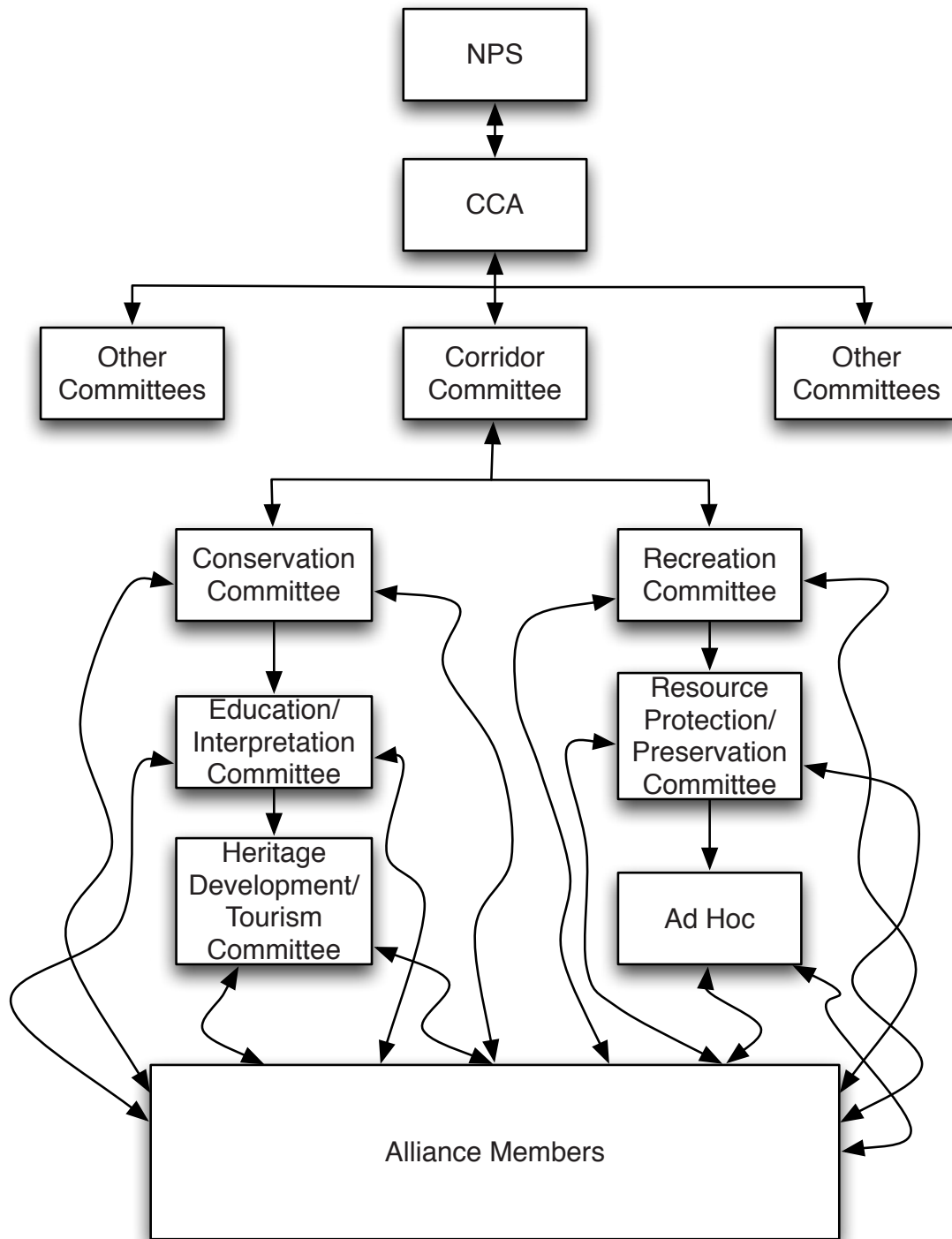
Street

City

State

Zip

Figure 5.4. IMCHNC Manegment Structure



Canal Alliance Committees

The members of the Canal Alliance work through five resource committees to develop projects and programs, coordinate activities, and communicate with like-minded members of the Canal Alliance.

Five Standing Resource Committees

- Resource Protection/Preservation Committee
- Recreation Committee
- Conservation Committee
- Education/Interpretation Committee
- Heritage Development/Tourism Committee

In addition, ad-hoc committees will be set up as the need arises. The resource committees are composed of Canal Alliance members actively involved in the Corridor and/or are members of a working group. They are recruited by the chairman of a specific resource committee for their interest, expertise, and commitment to the vision, mission, and guiding principals of the IMCNHC.

Resource Committees Responsibilities

- Advise the Canal Alliance Committee as to the needs within each program area.
- Recommend to the Canal Alliance Committee annual and other goals, priorities, and projects, including ways to educate and further involve constituents throughout the IMCNHC.
- Participate in accomplishing the goals of the IMCNHC.
- Help define the evaluation of the programs that they propose.
- Share informational materials with constituents in order to promote and encourage active participation throughout the IMCNHC.
- Identify to the Canal Alliance Committee any potential new Canal Alliance members and Investors.
- Recommend to the Canal Alliance Committee any individuals to serve on committees or as Members-At-Large.

In addition to the five resource committees, we expect several working groups to be established. These working groups will be created by Canal Alliance members, who will work with the five resource committees during the implementation phase of the management plan. These working groups identified below may change as the needs of the Canal Alliance and the heritage corridor change. They will be formed and disbanded as needed to address issues, concerns, or special projects that may arise during the implementation phase. Some working groups may require certain prerequisites while others are open to all Canal Alliance members.

Resource Protection and Preservation Committee (Figure 5.5)

The Resource Protection and Preservation Committee is one of the five resource committees of the Canal Alliance. This committee focuses on promoting the special places goal within the IMCNHC.

SPECIAL PLACES Goal: The Corridor's distinctive sense of place and natural, cultural, and historic resources will be recognized, embraced, and protected.

The Resource Protection and Preservation Committee is comprised of members selected from the Canal Working Group, Special Places Partners, and Special Places Advocates by the chairman of the Resource Protection and Preservation Committee. These working groups interface with the rest of the Canal Alliance through the Resource Protection & Preservation Committee.

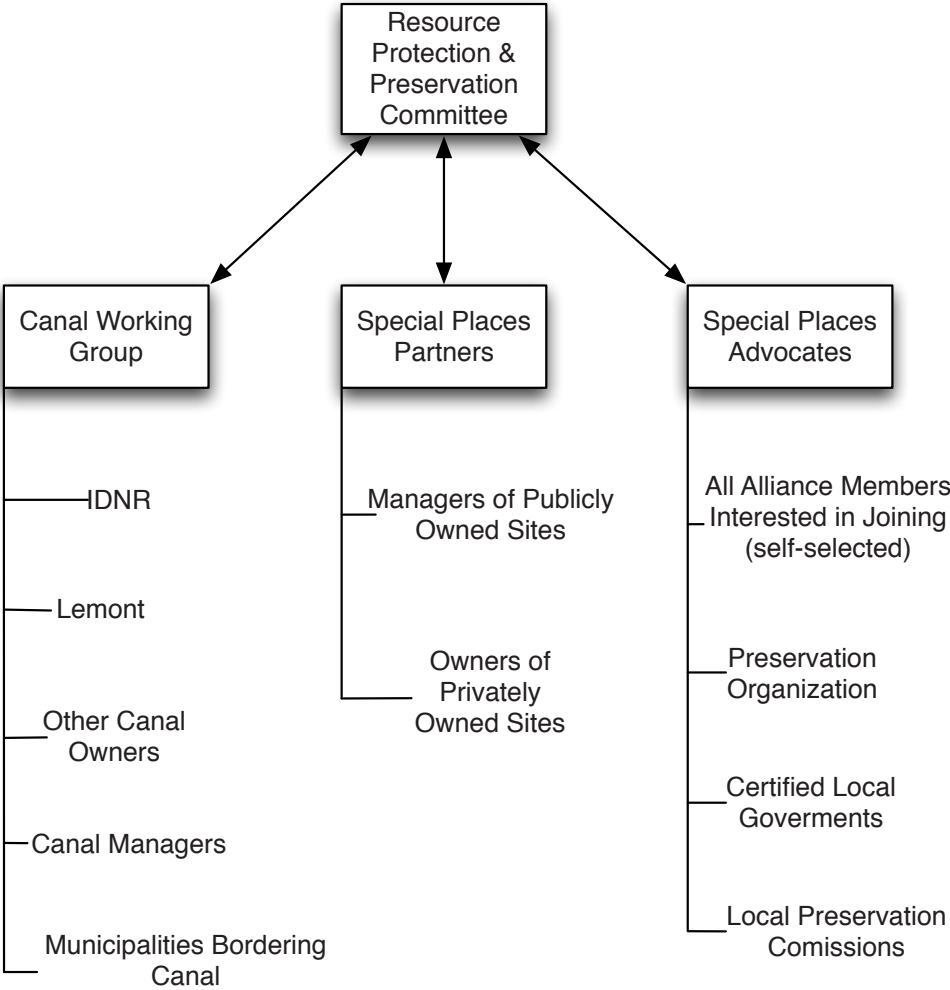
Canal Working Group

The Canal Working Group includes governmental agencies that own and/or manage sections of the I&M Canal, as well as municipalities that border the canal. The group will contain one or more representatives from the Illinois Department of Natural Resources as the main owner/caretaker of the majority of the canal. Other agencies that are currently eligible to participate are: the Chicago Metropolitan Area Planning, the Forest Preserve District of Cook County, Village of Lemont, the Metropolitan Water Reclamation District, the Will County Forest Preserve, Channahon Park District, the Lockport Township Park District, and National Park Service-Rivers & Trails MWR. The following municipalities are also eligible: Peru, LaSalle, North Utica, Ottawa, Marseilles, Seneca, Morris, Channahon, Rockdale, Joliet, Lockport, Crest Hill, Romeoville, Lemont, Willow Springs, and Summit. An agreement among members of this group and the Canal Corridor Association will be developed to define and document our goals and actions for collectively moving forward to preserve and interpret the I&M Canal.

Purpose:

- This group will define how the I&M Canal Alliance can best assist the canal's owners and caretakers and identify other potential funding sources to assist in routine and long-term maintenance of the canal.
- This working group will design new strategies and a new model for working collaboratively for the good of the resource.
- This group will explore potential roles for other federal and state agencies, including the US Army Corps of Engineers and the US Coast Guard.

Figure 5.5. Resource Protection & Preservation Working Groups and Partners



Special Places Partners

There are many “special places” in the IMCNHC that make the Corridor unique. This working group is comprised of owners and/or managers of these historic, cultural, and unique Corridor resources (other than the canal). They will come together to explore issues that are uniquely theirs. This group will develop and implement an action plan for recording, preserving, protecting, interpreting, and developing these resources for future generations. They may also develop training options for expanding their knowledge, skills, and capability to be successful in the long term.

Special Places Advocates

In addition to the Special Places Partners (the owners and/or managers working group), there are many individuals and a few preservation minded organizations that can be expected to want to volunteer their time to promote the recording, preservation, and protection of the Special Places of the IMCNHC. This working group will come together in ways that meet these goals. This group of advocates will be self selected and acknowledged for their efforts on an annual basis.

Recreation Committee (Figure 5.6)

The Recreation Committee is one of the five resource committees of the Canal Alliance. This committee focuses on promoting the recreational opportunities within the IMCNHC and enhancing and expanding the recreation amenities within the heritage corridor.

RECREATION Goal: The recreational amenities of the Corridor will be enhanced and expanded to facilitate their enjoyment by more people.

The Recreation Committee will be comprised of Recreation Partners and Recreation Advocates selected by the chairman of the Recreation Committee. These working groups interface with the rest of the Canal Alliance through the Recreation Committee.

Recreation Partners Group

The Recreation Partners Group is comprised of the Illinois Department of Natural Resources, owners of privately owned recreation facilities or businesses, managers of publically owned recreational resources, recreational groups, and private recreation providers within the IMCNHC.

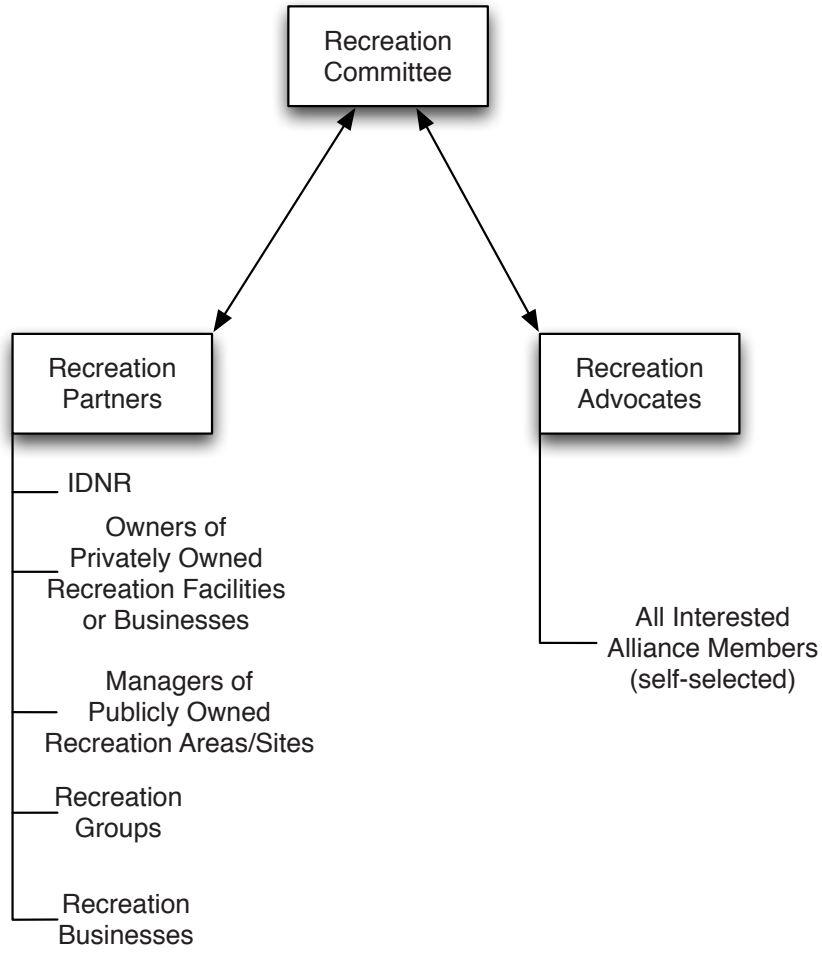
Purpose:

- Address concerns or issues facing recreation users within the IMCNHC
- Identify missing links in the trail system and/or user services in the IMCNHC
- Develop regional projects to promote, enhance, and coordinate recreation within the IMCNHC
- Market recreational opportunities within the IMCNHC
- Address trail maintenance issues within the IMCNHC

Recreation Advocates

Recreation Advocates are individuals and organizations (self-selected stakeholders) that advocate for recreation in the IMCNHC. They will work with Recreation Partners to promote recreation within the heritage corridor.

Figure 5.6. Recreation Working Groups and Partners



Conservation Committee (Figure 5.7)

The Conservation Committee is one of the five resource committees of the Canal Alliance. This committee focuses on promoting the stewardship of the natural resources within the IMCNHC.

CONSERVATION Goal: The stewardship of the Corridor's natural resources will be improved. Both the number of stewards and the commitment level and involvement of stewards will be increased.

The Conservation Committee will be comprised of Conservation Partners and Conservation Advocates selected by the chairman of the Conservation Committee. These working groups will interface with the rest of the Canal Alliance through the Conservation Committee. They will be charged with the design of an annual work plan to add value to the current conservation work being done in the IMCNHC.

Conservation Partners

Currently there are a number of government entities and non-profit organizations that are actively conserving natural resources within the boundaries of the IMCNHC. The U.S. Forest Service manages Midwin National Tallgrass Prairie, the first national tallgrass prairie in the country. The Illinois Department of Natural Resources owns and manages fourteen state parks and has designated twenty-one nature preserves within the heritage corridor. The three most eastern counties have county forest preserve districts which manage various natural sites within the IMCNHC. Some of these sites are potential locations for interpreting the stories of the heritage corridor. Cook County Forest Preserve District manages seventy-one natural sites. DuPage County Forest Preserve District manages three natural sites and Will County manages 28 natural sites. A complete list of the natural sites can be found in the appendix.

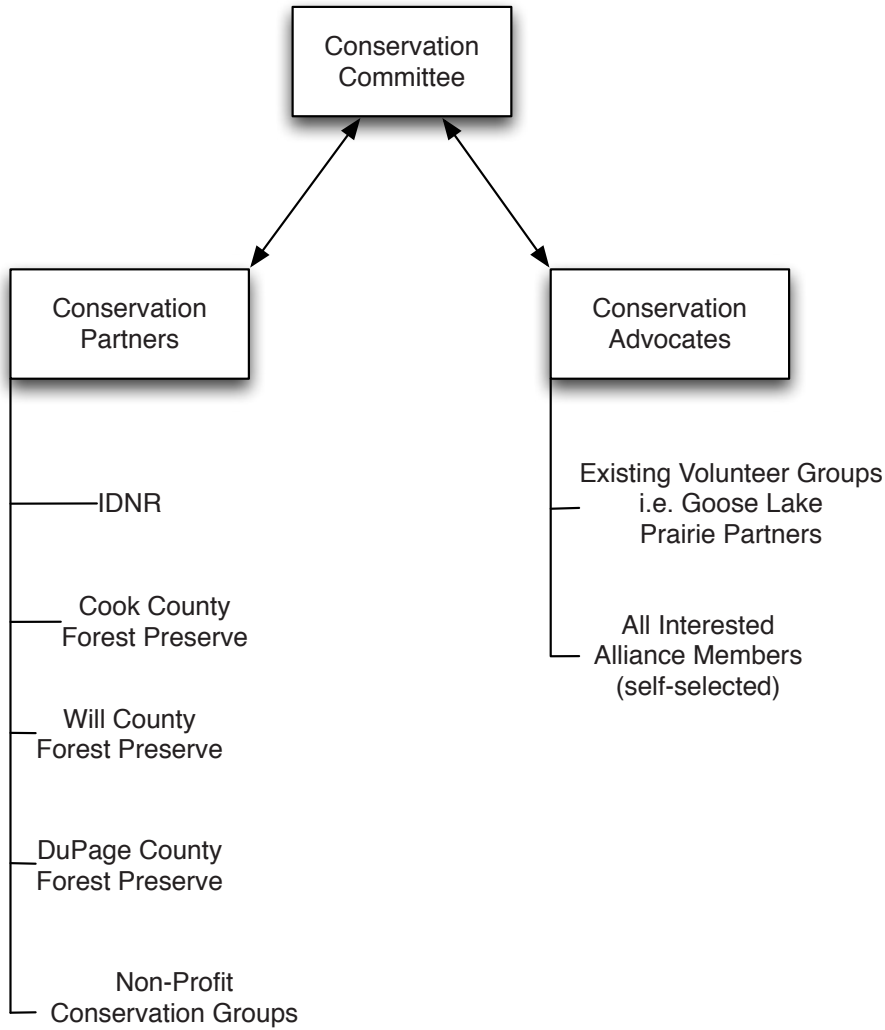
In addition there are several non-profit groups that work within the boundaries of the IMCNHC on conservation projects, including the Conservation Foundation, the Openlands Project and the Wetlands Initiative.

Conservation Advocates

In addition to the agencies and organizations that are currently conserving natural resources, there are many individuals who volunteer their time. A good example is the Goose Lake Prairie Partners, who assist in maintaining a natural prairie and promoting discovery of the natural heritage of the prairie ecosystem. The Canal Alliance will bring new and seasoned volunteers together as a volunteer workforce to address the current gaps in conservation work within the

IMCNHC boundaries. This group of advocates will be self selected and acknowledged for their efforts on an annual basis.

Figure 5.7. Conservation Working Groups and Partners



Education/Interpretation Committee (Figure 5.8)

The Education/Interpretation Committee is one of the five resource committees of the Canal Alliance. This committee focuses on promoting the stories of the IMCNHC.

STORIES Goal: The rich and complex stories of the history and continuing importance of the I&M Canal Corridor will be told through increasingly accurate, compelling, and interesting ways to larger audiences.

The Education/Interpretation Committee will be comprised of Storytelling Partners and Education Partners selected by the chairman of the Education/Interpretation Committee. The work of these two working groups will be facilitated, collected, and advocated by the Education/Interpretation Committee. These working groups will interface with the rest of the Canal Alliance through the Education/Interpretation Committee.

This committee will research and develop the stories of the IMCNHC based on the key themes outlined in Part 1 of the management plan. They will use a variety of methods to articulate the rich and complex stories of the passageway, sharing them with a diverse audience within the heritage corridor. The Education/Interpretation Committee will engage their audience utilizing a range of interpretive techniques to better convey their stories and make lasting connections with their audience, whether students or adults.

Storytelling Partners

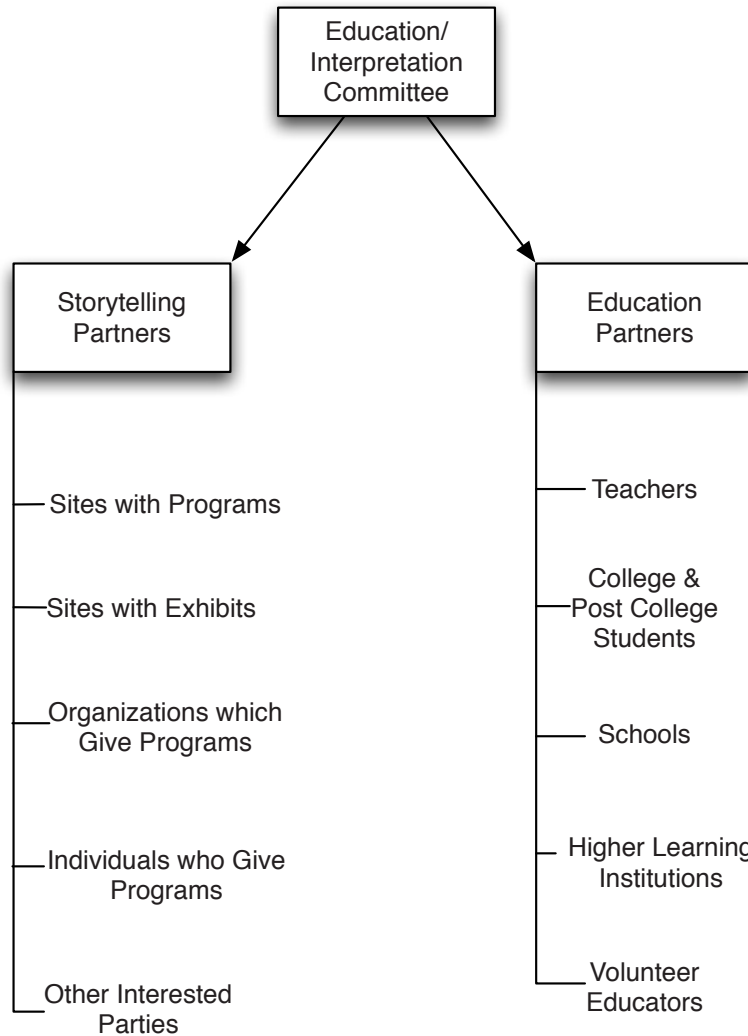
Those Canal Alliance members who are telling stories of the Corridor may join the Storytelling Partners. Storytelling Partners may also include sites that tell some part of the stories through exhibits or programs, as well as partners who tell stories without sites. For example, the LaSalle County Historical Society may join, as they have exhibits that tell part of the story. The Lemont Library may join, as they sponsor programs that tell the story; the Canallers, a group of first person interpreters, may want to join. They tell the stories of the Corridor at sites owned and managed by others.

Storytelling Partners will be certified. The certification process will ensure that the stories being conveyed are accurate, compelling, and interesting. Each applicant will answer the following questions as part of the review process.

- How do you convey the overall I&M Canal Passage storyline?

- Which I&M Canal themes do you cover in your exhibits/presentations/programs/events?
- How do you convey them to visitors?
- Describe your exhibits, programs, and/ or events.

Figure 5.8. Education and Interpretation Working Groups and Partners



The Storytelling Partners will work with each other and with other members of the Canal Alliance in an on-going peer review process to ensure high standards of interpretation.

The Canal Alliance will work to provide the following services to the Storytelling Partner Network:

- Interpretive services
- Traveling exhibits
- Speakers bureau

- Interpretive signs
- Exhibit text and/or research assistance
- Classes on interpretation techniques
- Classes on presentation technique
- Classes on new technologies

Education Partners

Education Partners are teachers, college or post-college students, schools, higher learning institutions, and volunteer educators who are self-selected and work toward furthering the Storytelling Goal. There are many ways Education Partners can further the Storytelling Goal. A few examples are listed below.

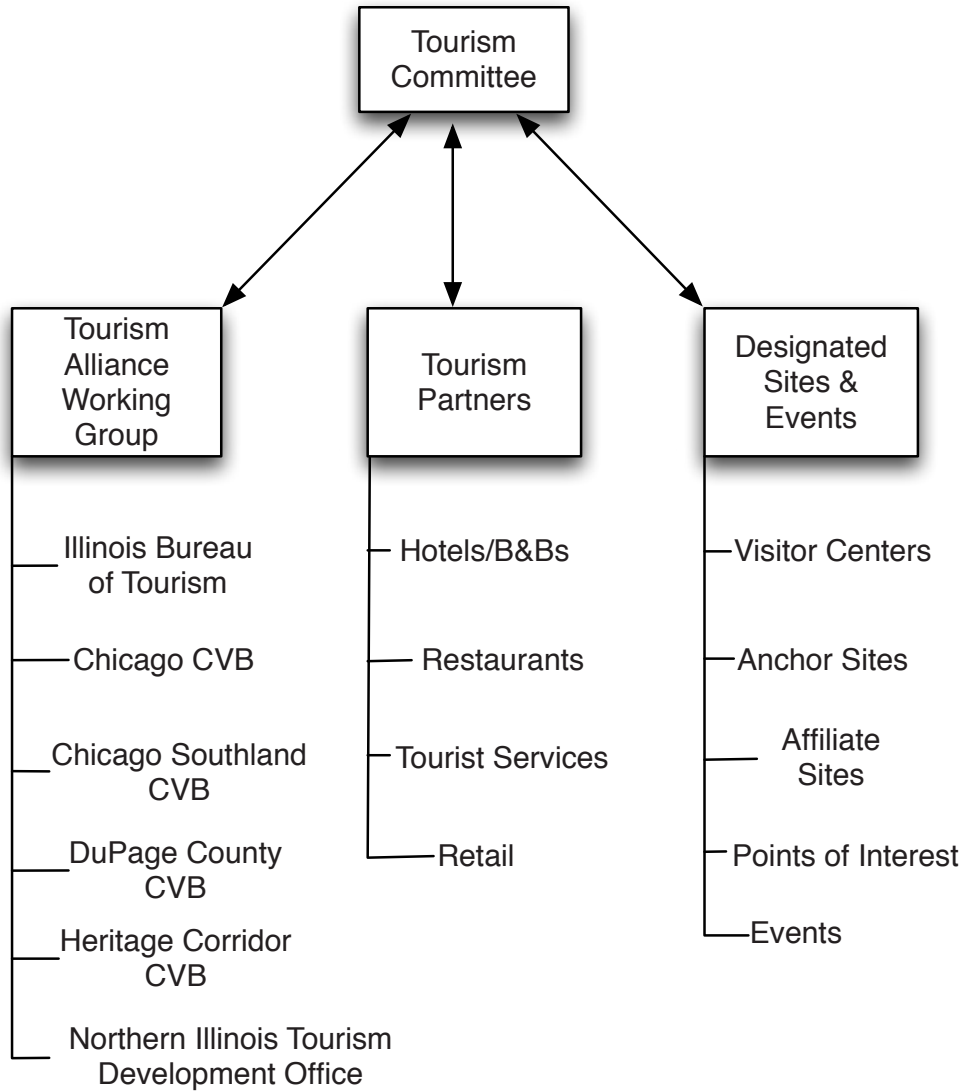
- Teachers: Share the stories of the history and continuing importance of the IMCNHC with their students and develop teaching tools for communicating the stories of the Corridor
- College/Post College Students: Research and develop the stories of the Corridor as an intern in the IMCNHC internship program
- Schools: Commit to teaching the history of the I&M Canal
- Higher Learning Institutions: Develop and run training programs for teachers to better equip them to tell the stories of the Corridor
- Volunteer Educators: Research and develop educational programs and present programs to students in the heritage corridor

The Education Partners will sign an agreement with the Canal Corridor Association outlining how they will tell the history and continuing importance of the I&M Canal National Heritage Corridor. The Canal Alliance will provide lesson plans and educational resources to teachers who in turn pledge to teach canal history, communicate how many students they instructed, and evaluate the success of their lessons and educational programs. The Educational Partners will also be asked to provide feedback on educational materials used and to share any original material they produce.

Tourism Committee (Figure 5.9)

The Tourism Committee is one of the five resource committees of the Canal Alliance. This committee focuses on promoting the economic growth of the IMCNHC through heritage tourism and heritage development.

Figure 5.9. Tourism Working Groups and Partners



ECONOMIC IMPACT Goal: The Corridor's economic growth will be built through an increase in heritage tourism and heritage development. Historical and cultural based venues in the Corridor will be enhanced through increased interpretation, use of new technologies, and increases in visitor services and marketing. Entrepreneurial and family-owned businesses will be supported with increased tourism strengthening historic downtowns.

The Tourism Committee will be comprised of the Tourism Canal Alliance Working Group, the Tourism Partners, and the Designated Sites & Events selected by the chairman of the Tourism Committee. These working groups will interface with the rest of the Canal Alliance through the Tourism Committee.

Tourism Working Group

The Illinois Office of Tourism within the Department of Commerce and Economic Opportunity currently certifies several organizations that promote tourism within the boundaries of the I&M Canal National Heritage Corridor.

It is proposed that the Canal Alliance work with this group of government agencies and organizations as a working group to develop a coordinated strategy to assist the I&M Canal Canal Alliance in meeting the Economic Impact goal of this Plan.

The organizations with their areas of jurisdiction are listed below.

- Illinois Office of Tourism (entire Corridor)
- Chicago Convention and Visitors Bureau (Chicago and Stickney)
- Chicago Southland CVB (Alsip, Bedford Park, Blue Island, Bridgeview, Burnham, Calumet City, Calumet Park, Crestwood, Dolton, Forest View, Hickory Hills, Palos Heights, Palos Hills, Palos Park, Riverdale, Robbins, Summit, and Worth)
- DuPage County CVB (Woodridge and Burr Ridge)
- Heritage Corridor CVB (Bolingbrook, Channahon, Coal City, Countryside, Crest Hill, Hodgkins, Indian Head Park, Joliet, Justice, LaSalle, Lemont, Lockport, Lyons, McCook, Marseilles, Minooka, Morris, Oglesby, Ottawa, Peru, Romeoville, Seneca, Utica, Willow Springs, Carbon Hill, Naplate, and Rockdale)
- Northern Illinois Tourism Development Organization (Grundy and LaSalle Counties)
- Chicago Plus Regional Tourism Development Office

Tourism Partners

Tourism Partners are stakeholders who have an interest in the heritage development and/ or tourism development of the IMCNHC. Tourism Partners may have sites which are open for tourists, have businesses that cater to tourists such as hotels and restaurants, and/or hold events that attract visitors. Some members of the Tourism Partners may want to get their site(s) or event(s) designated by the I&M Canal Alliance in the programs listed below, while others will not qualify. Tourism Partners will define ways to work together.

I&M Canal Designated Sites & Events

To help achieve this goal, the Canal Alliance will establish a designation program for visitor centers, anchor sites, affiliate sites, points of interest, and events. Criteria will be established for each designation and a benefits program will be established to enhance and promote the designated sites. The designations are briefly outlined below.

I&M Canal Passage Visitor Centers

Designated as first stops to assist the visitor in planning his or her I&M Canal visit. Visitor Centers must meet the highest standards for highway access, signage, and visitor services such as parking, restrooms, visitor information, and hours of operation.

I&M Canal Passage Anchor Sites

Full service sites that are open to the public more than 1200 scheduled hours per year and actively interpret at least two IMCNHC interpretive themes are eligible.

I&M Canal Passage Affiliate Sites

Sites that are open less frequently and/or have more limited services than Anchor Sites. Affiliate sites must be open more than 600 scheduled hours per year, have on site staff or volunteers, and interpret at least one IMCNHC theme on a regular basis.

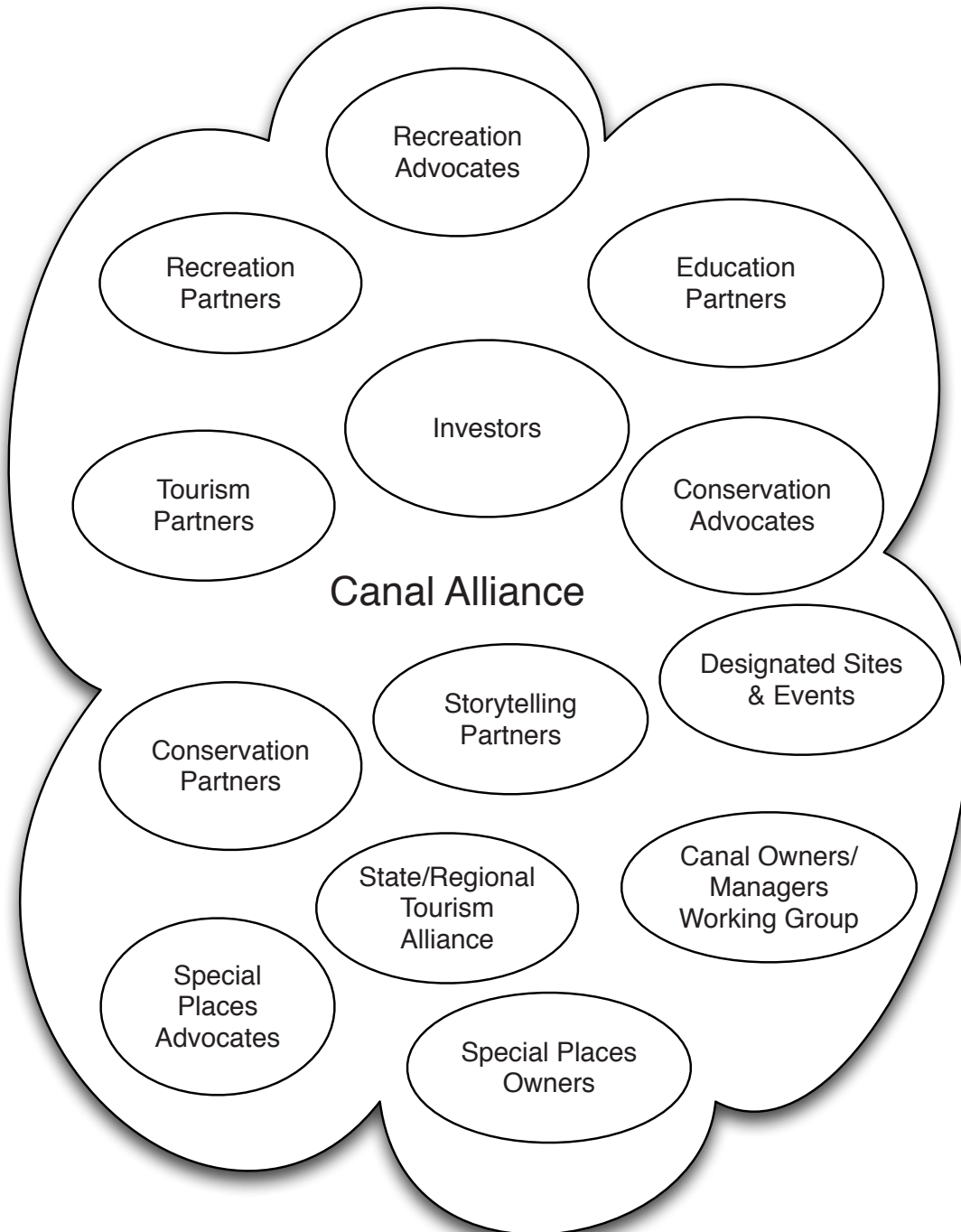
I&M Canal Passage Points of Interest

Extant canal sites that do not have staff or services but are safely accessible to the public and relate to one or more IMCNHC interpretive themes. An interpretive sign or other agreed upon interpretive material must be available to the public. A single entity may register multiple sites as Points of Interest.

I&M Canal Passage Events

Existing and proposed events that have a historic, cultural, or natural focus, have limited services, and are open to the public and marketed to a visitor market.

Figure 5.10. Canal Alliance and Working Groups



Canal Alliance Coordination

In 2006, the US Congress designated the Canal Corridor Association (CCA), a 501 (c) 3 non-profit governed by a board of directors, to be the local coordinating entity for the Illinois & Michigan Canal National Heritage Corridor (IMCNHC). The Canal Corridor Association's board of directors has direct fiduciary responsibility for the federal monies appropriated to the IMCNHC. They are responsible for raising and accepting the local match for the federal monies appropriated and preparing an annual audit.

CCA will hire Canal Alliance staff to manage the day-to-day activities. The Canal Alliance staff will serve as the staff to the Alliance Committee, the five resource committees and all working groups, and will facilitate communication between the parts of the Canal Alliance.

To further facilitate the coordination of efforts made on behalf of the heritage corridor, CCA will create an additional standing committee of the board, the "Canal Alliance Committee," to oversee the implementation and ongoing operations of the IMCNHC program outlined in this plan.

The general duties of the Canal Alliance Committee are as follows:

- Oversee the implementation of the management plan
- Ensure continued civic involvement, including holding quarterly public meetings to present, review, and update the public on the activities and programs of the IMCNHC
- Design and oversees plan for soliciting sponsor donations and other means to meet federal match requirements, such as fees for service
- Review recommendations of its subcommittees
- Set annual priorities consistent with the legislation and management plan based on funding considerations and the decision making criteria included in the plan
- Develop projects that cross subcommittee program areas
- Recommend projects to CCA Board for approval

The Canal Alliance Committee will be composed of three CCA board members, the CCA President, sub-committee chairs, and four committee members-at-large. To initially establish the Canal Alliance Committee, the CCA Board Chairman will name the Canal Alliance Committee Chair and two additional members from the CCA Board; name the five sub-committee chairs from those participating in the Plan development activities; and name the members-at-large based on recommendations from the CCA Board and CCA President, the Re-

source Committee Chairs, and others the CCA Board Chairman may choose to consult. The Canal Alliance Committee shall approve a list of candidates for At-Large membership at its first meeting.

All Canal Alliance Committee meetings shall be held at specified times and places which are convenient and open to non-committee members and held no less often than quarterly.

The Canal Alliance Committee will coordinate with and accept project proposals from the five resource committees.

Figure 5.11. Process for New Ideas/Projects

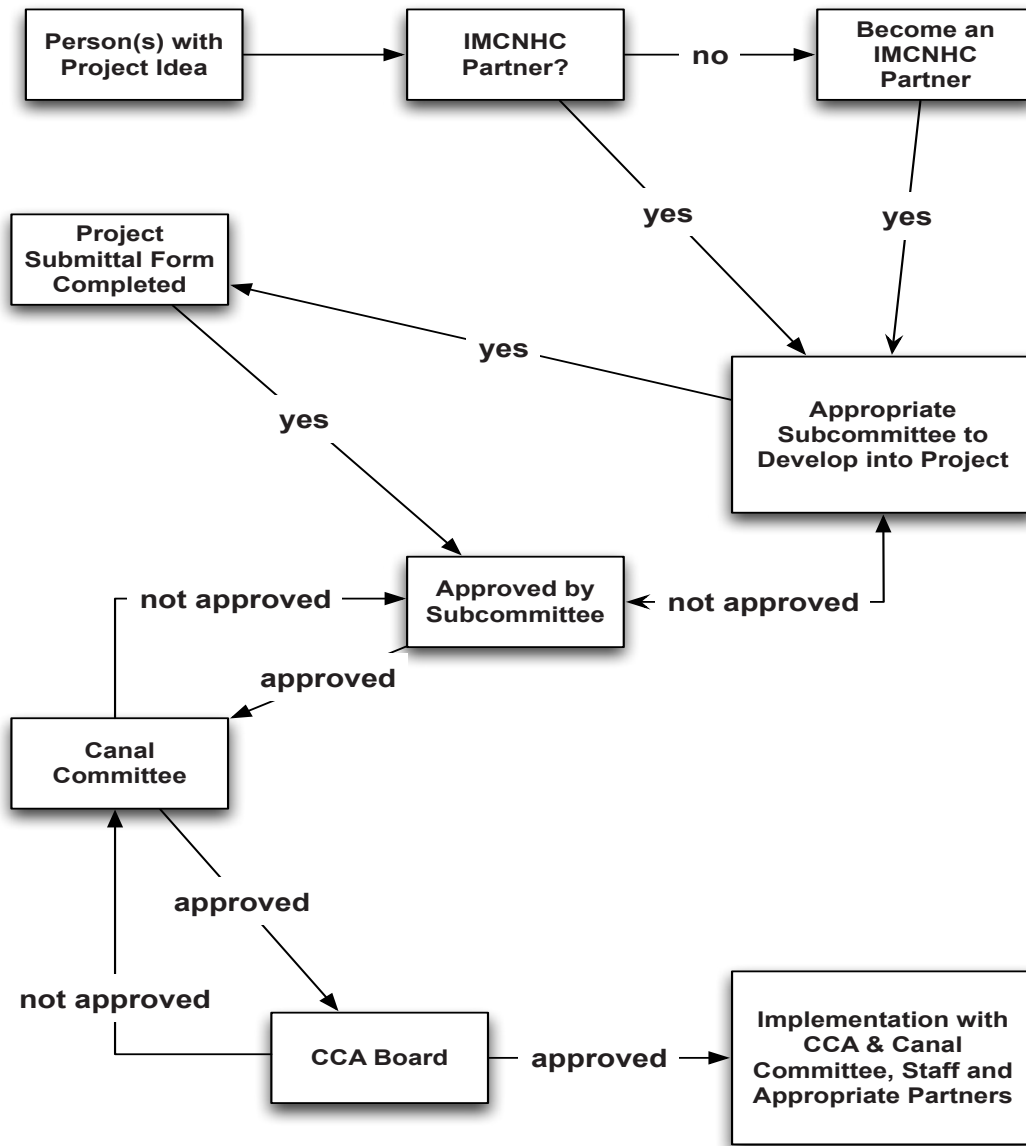


Figure 5.12. IMCNHC Project Proposal Form

IMCNHC Project Proposal Form

Date: _____

Project Name _____

Project Sponsor _____

Contact Person: _____

Email _____

Phone: _____

Short Project Description

Does this project align with the vision, mission, and guiding principles of the IMCNHC?

- YES
- NO

Are you aware of any potential funding for this project?

- YES
- NO

Are you aware of any other individuals/groups who would like to be involved in this project?

- YES
- NO

Please submit this form to the Canal Corridor Association by:
E-mail: cca@canalcor.org

Fax: 815-223-6129

Mail: 754 First Street
LaSalle, IL 61301

Figure 5.13. Canal Alliance Project Submittal Form

Project Name _____

Corridor Subcommittee _____

Part A

Which IMCNHC goal(s) will your project address?

Estimated Project cost: _____

Estimated Project people hours: _____

Counties in the IMCNHC Affected _____

Potentially interested partners in the Canal Alliance:

Check all that apply at this time

Project is in idea stage

Project is partially planned

Project is fully planned

Project has over 25% funding committed

Project has over 50% funding secured

Project has over 50% of people resources committed

Project is ready to be implemented

Project has an evaluation of success criteria determined

Partner request(s) (check all that apply)

This project needs matching funding through the IMCNHC Plan

This project needs implementation help from the IMCNHC Plan

This project needs staff help to apply for potential inclusion in IMCNHC Plan

This project needs other Canal Alliance partners for regional implementation

This project needs communications aid for promotion, once accepted

Part B

Project Name: _____

Project resource requirements

Maximum people required

Local funding secured - \$_____

other resources (list) _____

Project Steps

- 1.
- 2.
- 3.
- 4.
- 5.
- 6.
- 7.
- 8.
- 9.

Communication Requirements

1. Press release sequence
2. Photo ops planned
3. Web presence
4. Other

How does the project fit within the IMCNHC Vision? _____

How does this project help accomplish the IMCNHC Mission? _____

Which IMCNHC Guiding Principles are most used in the project? _____

How will the project be evaluated for meeting the IMCNHC Goals? _____

How will the project be evaluated for success? _____

Partners involved in the project

-
-
-
-
-
-

How many of the "public" will be "touched" because of the project? _____